

YOUR GLOBAL PARTNER FOR SAGE X3 SERVICES AND SOLUTIONS

SUPPORTING Sage X3 ECOSYSTEM WORLDWIDE





03

About Us

04

Our X3
Services

05

Our X3
Solutions

05

X3 Value
Proposal

06

Rental
Management
for Sage X3

14

PetroChem TMS
for Sage X3

16

Route
Optimizer
for Sage X3

19

Speed Sales
for Sage X3

**Best International
Sage X3
Development Partner 2014**

Sage X3 Global Convention
Lisbon - May 2014

**Development Partner
of the Year 2014**

Sage Middle East
Dubai - Oct 2014

ABOUT US



A multi award winning organization fully dedicated to Sage X3

Tema Business Systems

is a global service and solution provider for Sage X3, based in India and serving Sage X3 ecosystem worldwide.

Our business strategy and solutions portfolio are exclusively dedicated to Sage X3 platform, offering Sage partners and Sage Opco in-depth expertise along with significant cost saving through our offshore-on-site execution and delivery model.

We bring the benefits of a global, international partner with the service quality and reactivity of local company.

X3 SERVICES



Sage X3 Development

With more than 45 consultants exclusively dedicated to X3, our practice is one of the largest development entity in Sage X3® ecosystem.



Support & Helpdesk

An unique offer on the market, our support solution is mix of support ticketing application directly integrated into X3 and a global helpdesk operating 24/7.



Migration

With years of successful migration projects, both from X3 to X3 and other ERPs to X3, we have developed our own migration platform to automate recurring tasks and reduce manual efforts.

FLEXIBLE ENGAGEMENT MODELS

OFFSHORE

- Suitable for large customization projects having well defined goals and detailed documentation.
- Executed by our offshore team, delivered locally.
- Backed by very strong project management platform to follow up project execution and deliverables.

ONSITE

- Our consultants join your team onsite and work under your brand.
- Executed by consultants onsite, on your premise or your customer site.
- Immediately ramp-up your implementation team without hiring or training full-time resources.

BLENDED

- A mix of onsite consultants and offshore resources, working as a global team.
- Onsite team is able to address and attend to critical issues requiring immediate attention, while offshore team will work on customization and solution build-up.

X3 SOLUTIONS



Equipment Rentals

Rental Management System is a solution that serves the needs of industries that rent equipment, items and services, including construction, equipment dealers, healthcare, real estate, transportation, and others.



Petro-Chem Logistics

A comprehensive add-on that covers wide range of PetroChem specific logistic requirements (bulk / dry storage), handling, operations, SHEQ, billing and interface with industry specific platforms (customs, ports, B2B...).



Route Optimizer

Route Optimizer helps to schedule, plan and optimize deliveries across multiple destinations in the most optimal sequence. One of key feature is the automatic calculation of the loading plan based on various criterias and business constraints



Speed Sales

Speed Sales offers very simplified, intuitive Point of Sale solution for Sage ERP X3. It provides real time integration with x3 to view, sell and control inventory, process payments and manage deliveries.



Explore our full list of solutions for Sage X3 :
www.tema-systems.com/solutions

OUR X3 VALUE PROPOSITION

CAPACITY

- One of largest Sage X3 development center with 45+ consultants specialized on X3.
- 24/7 HelpDesk
- Offshore/Onsite resource execution model.
- International Mobility.

QUALITY

- CMM Level 4 compliant delivery model.
- Certified consultants and business solutions (completion by july 2015).
- Comprehensive delivery package : delivery notes, patch, user manual, test case, user acceptance testing support documentation, X3 online help files.

INNOVATION

- X3 Mobility Services/ Application (Workflow, CRM).
- Adoption of best UI technology to maximize usability and user adoption.
- Vertical modules for specific industries.
- Add-on and localization.



**RENTAL
MANAGEMENT
SYSTEMS**

FOR
SAGE X3

CONSTRUCTION | AUTOMOBILE | HEALTHCARE | OIL & GAS | REAL ESTATE



CONSTRUCTION

Building Materials, Cranes, Forklifts, Pumps, Scaffolding...



TRANSPORTATION & LOGISTICS

Containers, Trucks, Railcars, Cars, Engines...



HEALTHCARE

Medical Instruments, Scanners and Monitors, MRIs...

Rental Management for Sage X3

INDUSTRIES THAT RENT EQUIPMENTS

Rental Management System is a solution that serves the needs of industries that rent equipment, items and services, including construction, equipment dealers, Petro-chem logistic providers, Healthcare, Real Estate, Automobile, and others.



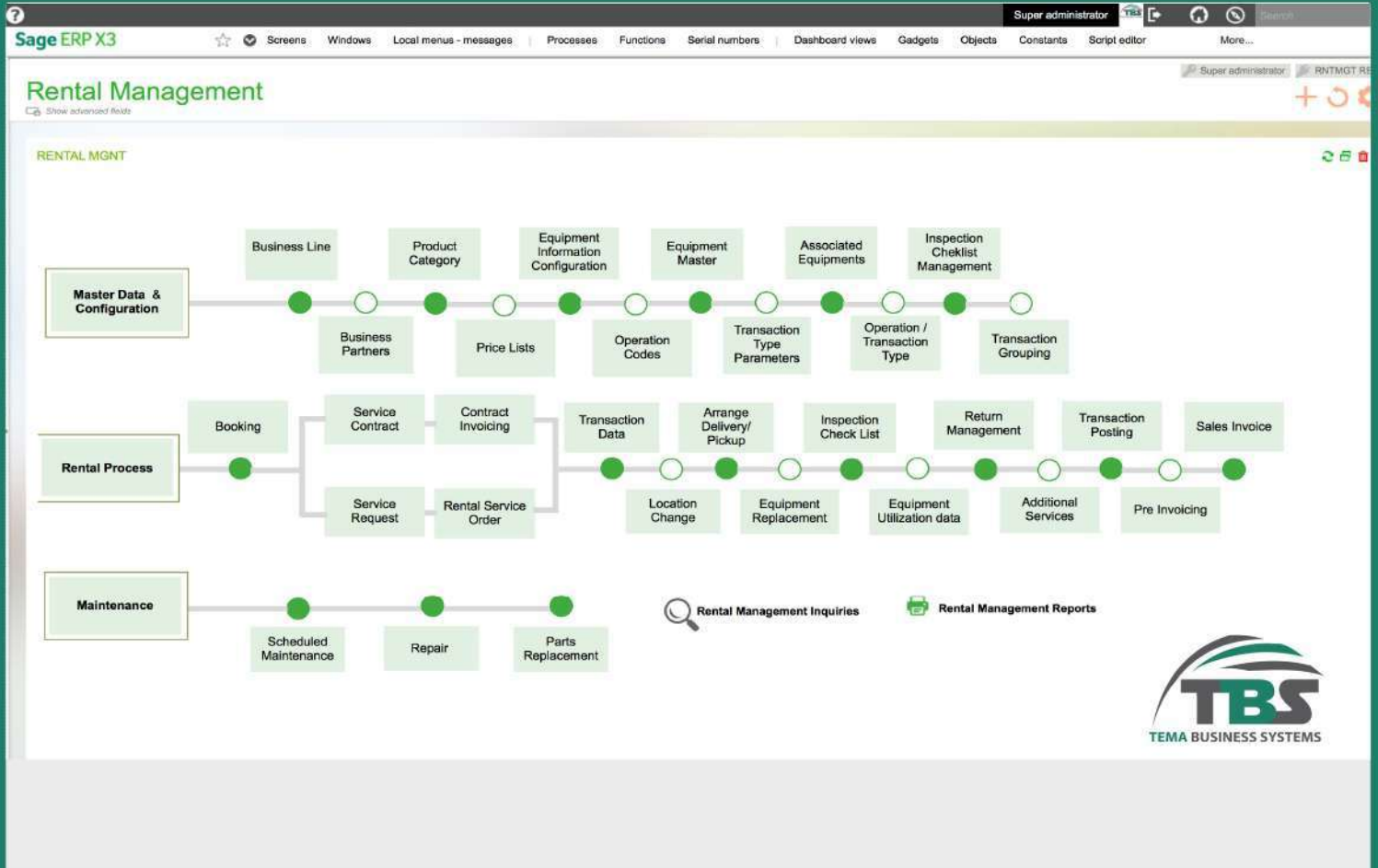
OIL & GAS

PetroChem storage capacity rentals in Tank Farms and Warehouses...

Rental Management

for Sage X3

Visual Process driven processes for Booking, Rental, Contract , Billing and Maintenance activities.



FULLY INTEGRATED INTO SAGE X3

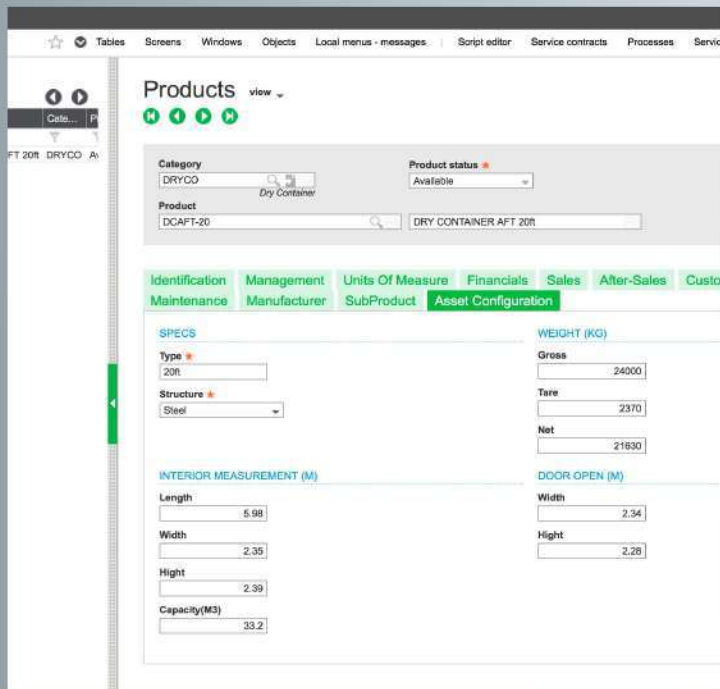
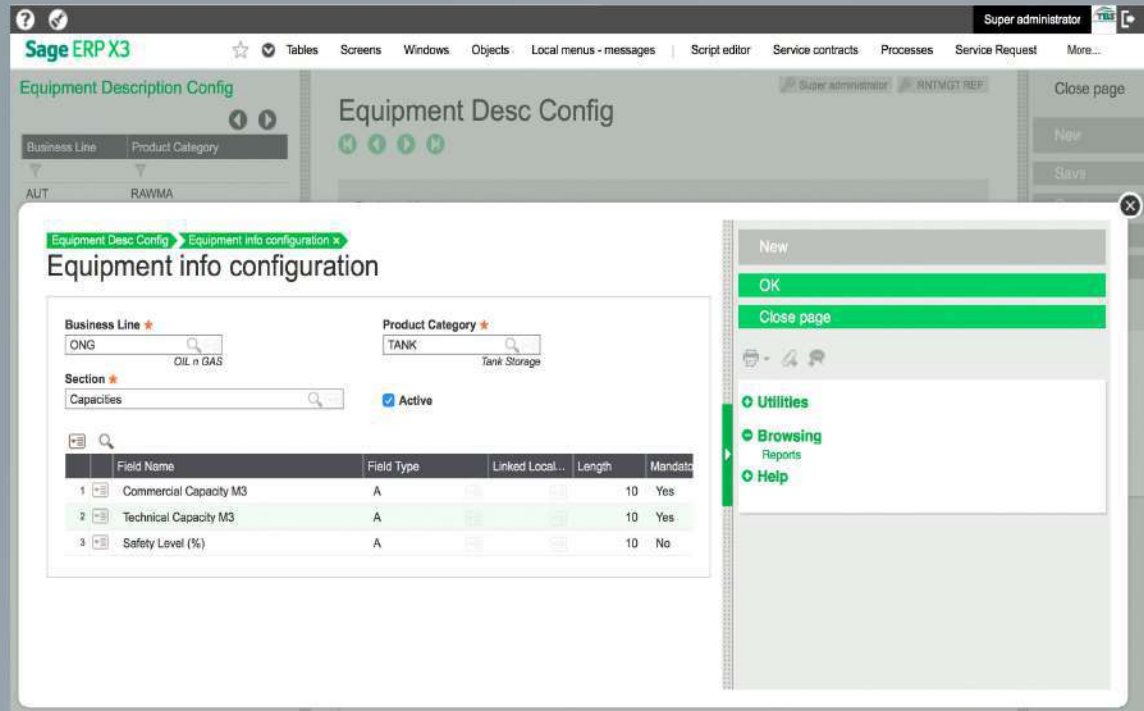
Developed as a business add-on, the solution is fully integrated into Sage ERP X3 with real time interaction with standard modules.

KEY FEATURES

Rental Management System for Sage X3 provides an integrated suite of modules that meet the needs of rental specialists. Providing visibility into your equipment, inventory, contracts, customers, financials, and business processes allow you to provide high levels of service to your customers.



Rental Management for Sage X3



RENTAL ASSET DATA CONFIGURATION

Each Rental industry has to manage various types of assets (vehicles, containers, construction machines, tanks, generators...), it is essential to capture the most relevant descriptions and characteristics of your rental assets.

Rental Management Systems for Sage X3 is packaged with powerful and robust features to dynamically design your rental Asset Data Configuration, by allowing you to create type of assets, configuration sections and detailed fields with control types.

As a result, rental Asset Master screens are automatically adapted for each type of asset and let you capture information that is most relevant for your asset types.

CONTRACT DRIVEN RENTALS

Rental Contract is performed through a quotation, contract creation and associating rental assets to contract :

- Asset, Equipment, Accessories that are to be rented,
- Services required - set up, delivery, servicing, and etc.
- Additional items to be sold, such as consumables
- Terms of contract - Pickup or Delivery Management, rental dates, renewal policy and invoicing periodicity and price determination rules.

Rental business processes may vary per industry and asset types.

Rental Management System for Sage X3 offers very adaptive business processes that best fit your industry requirements.

Some rental processes are contract centric while others are service order centric.

These are essentially rentals for mid and longterm duration with specific contractual terms for pricing, services and maintenance policies.

Drive your rentals through contracts, or service orders or both.

Sage ERP X3 Super administrator

Windows Local menus - messages Processes Functions Serial numbers Dashboard views Gadgets Objects Constants Script editor More...

Booking Inquiry Default

CRITERIA

Rental date interval: Day From Date: 04/29/15 To Date: 05/08/15

Site: NAO11 Business Line: LOG Equipment Category: DRCN Rental type: Service Request Description:

Results

RESULTS

15 Results Display: 10

Equipment	Description	Stock Quantity	Stock Unit	04/29/15	04/30/15	05/01/15	05/02/15	05/03/15	05/04/15	05/05/15	05/06/15	05/07/15
AFT-100DC	Dry Container 100FT ADR	900.00	EA	900	900	900	900	900	900	900	900	900
AFT-10DC	Dry Container 10FT ADR	880.00	EA	880	880	880	880	880	880	880	880	880
AFT-20DC	Dry Container 20FT ADR	940.00	EA	940	940	940	940	940	940	940	940	940
AFT-30DC	Dry Container 30FT ADR	0.00	EA	N/A	N/A	N/A	N/A	N/A	N/A	N/A	N/A	N/A
AFT-40DC	Dry Container 40FT ADR	0.00	EA	N/A	N/A	N/A	N/A	N/A	N/A	N/A	N/A	N/A
AFT-50DC	Dry Container 50FT ADR	0.00	EA	N/A	N/A	N/A	N/A	N/A	N/A	N/A	N/A	N/A
AFT-60DC	Dry Container 60FT ADR	0.00	EA	N/A	N/A	N/A	N/A	N/A	N/A	N/A	N/A	N/A
AFT-70DC	Dry Container 70FT ADR	0.00	EA	N/A	N/A	N/A	N/A	N/A	N/A	N/A	N/A	N/A
AFT-80DC	Dry Container 80FT ADR	0.00	EA	N/A	N/A	N/A	N/A	N/A	N/A	N/A	N/A	N/A
AFT-90DC	Dry Container 90FT ADR	0.00	EA	N/A	N/A	N/A	N/A	N/A	N/A	N/A	N/A	N/A

SELECTED ITEMS

Equipment	Description 1	Rent Start Date	Rent Return Date	Duration	Unit	Quantity to Rent	Unit	Unit Price	Total Price	Currency
1										

Rental Management

for Sage X3

POWERFUL BILLING RULES

Each industry has its own set of commercial and billing rules for rentals. Containers are rented per duration while car rentals are billed per duration and mileage.

Configure how you want to bill your rentals per Asset Category and your business processes will automatically take into account all the parameters you need to manage on the field.

Pre Configured Billing Rules for :

Duration

- Days
- Weeks
- Months
- Quarter

Forfait

- Indexed on duration
- Indexed on Utilization
- Pro-rated

Utilization

- Mileage
- Meter Reading
- Counters

Occupation (warehouse)

- location
- number of moves

Rental Management

for Sage X3

REPORTS & ANALYTICS

OPERATIONAL

- Planning (Reservation, Maintenance, service orders...)
- Asset Utilization Reports
- Inspection and Checklist issues
- Service Orders

FINANCIAL

- Rental Contract per Asset
- Billing per Asset types
- Contract Profitability Analysis reports
- Asset depreciation

MAINTENANCE

- Scheduled Maintenance and Alerts
- Maintenance Service Orders
- Inspection Failures
- Safety records and compliance

PetroChem TMS

for Sage X3

PetroChemical Terminal Management System (TMS)



Developed as a vertical and fully embedded into Sage X3, the Terminal Management System module offers the combined features of a world class ERP along with the specific business processes of Petrochemical Terminating and Logistics.



Managing inventory and logistics for Petro-Chem industries is not simple business.

The bulk stock inventory is unique : products are bought and sold in variety of units and measurements. Controlling the storage, measurement and transactions of bulk inventory is a very complex supply chain issue.

TMS is designed to effectively manage high volume bulk inventory transactions, across all operational and commercial processes such as storage, heating,blending and drumming.

Key Features

Common Data

- Chemical Products
- Drum Products
- Service Products
- Tanks Farm
- Product Lot (Batch)
- Drum Types
- Line Management

Tank Calculation Data

- Strapping Tables
- Tank Calculations formulas (API tables, Bitumes, VCF based...)
- Floating Roof data
- Spec Density
- Tank Height Ranges
- Steel expansion
- Tank interpolation

TMS Operations Management

- Intervention Management
- Operations Planning and Planned Stock
- Operations Status Management
- Operations validations & Control (product/tank association, inventory level checks, safety controls...)
- Work Order Management
- Product lot association (for drum/warehousing)
- Drumming
- Blending
- Samples Management

Tank Calculation

- Tank Calculation through 'Tank Inventory Calculator' (to simulate and determine transferred quantities or tank level status after a movement)
- Connection Management associated to tank calculations
- Product/customer VCF parameterization
- Pumping data/quantity evaluation for marine movements

Key Reports & Inquiries

- Contract Listings/tanks tariffs/hardware park
- Pre-Invoice reports
- Sales reports (Invoices, Invoice summary, sales per type, products, activity...)
- Traffic related reports (Traffic Analysis per contract, customer, product, period, statistic groups...)
- Inventory reports (tank history, tank calculation, pumping reports...)
- Operational reports (work orders, BoL, Receipts, weighbridge tickets, tank status, ship visit details, DMR...)
- Safety reports (emergency tank list, emergency warehouse reports)
- Statistics (top 10 traffic, top 10 sales, top 10 occupancies, overcapacities...)

Logistics Data

- Drivers
- Trucks / Cisterns / Railcars
- Ships / Barges
- Ship History
- Address Management
- Loading Stations

Commercial / Invoicing Data

- Contract Management
- Customer related (addresses, contacts)
- Invoicing grouping (per type of activity)
- Contract Hardware Park
- Contract Pricing
- Product Tax Rules
- Customer Tax rules
- Invoicing Targets
- Recurring contract invoicing
- Specific Pricing structures (contract, tank, operations)

Invoicing Process (Sales)

- Contract based activities (Tank rental, forfait invoicing, warehousing...)
- Pre-Invoicing (simulations based on actual invoice data)
- Heating
- Nitrogen
- Throughput
- Railcar storage and related operations
- Insurance

Interfaces

- CIDX / ELEMICA
- Weighbridge connections
- Customs (for alcohol)
- Label printing (for samples)
- Process Controls (For BITUMEN / FUEL automated loading stations)

Operational Data

- Allowed Product
- Risk & Safety Sentences
- ADR data
- Mandatory Operations (per customer / activity)
- Weighbridge
- Timesheet

Key Benefits

- Seamless integration into Sage X3 enabling realtime posting of TMS operations into ERP.
- Extensive coverage of all field operations such as tank operations, truck loading and unloading, railcars, vessel, pipeline operations, drumming and blending.
- Tank inventory calculation using official American Petroleum Institute® (API) tables for petroleum, chemical products.
- Contract management that allows price setup by product, group of tanks, global volume and capacity.... and more.
- Commingled Stocks.
- Bonded Tanks and Warehouse management
- Interfaced with field instruments such as weighbridge, tank radar, pumps or SCADA automation systems.
- Ready made interface to european CUSTOMS (NCTS) and USA (Extars).
- KPI Reports (Top 10 customers - Products - Activity).
- ... more

Route Optimizer

for Sage X3

Automated Delivery Route Optimization and Load Planning



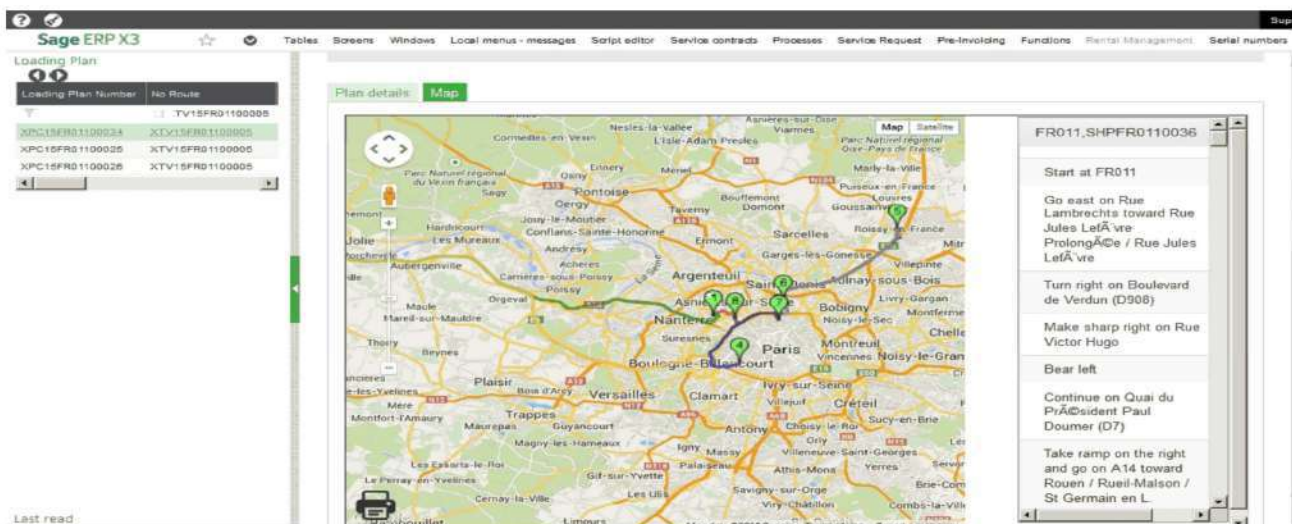
- Multi depot routing
- Load Planning
- Fully integrated into Sage ERP X3
- Intuitive user Interface
- International Maps
- Predictable delivery schedule

Route Optimizer is a smart add-on fully integrated into Sage X3 that helps to schedule, plan and optimize deliveries across multiple destinations in the most optimal sequence.

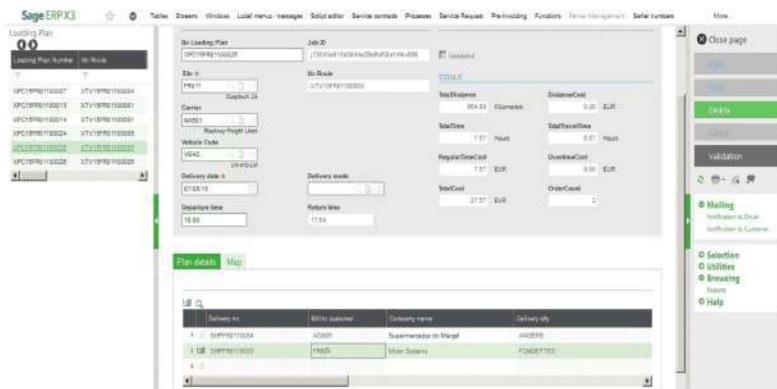
Powerful Delivery Routing and Load Planning

Route Optimizer captures details of delivery addresses, quantities, preferred time windows, vehicle types and capacities, driver shift details, and other logistic parameters and uses complex algorithms to calculate the most effective delivery sequences. It can provide accurate driving times then allocate loads to appropriate vehicles and their drivers.

Route Optimizer automatically calculates delivery schedules for your fleet, then validate or manually modify proposed routes and sequences and send confirmation to your drivers with maps and driving instructions.



Simply select ready-to-dispatch deliveries and let Route Optimizer to automatically create loading plan, select drivers and trucks, create delivery sequences, create maps and notify your customer... all within minutes !



Packed with advanced features, the solution can be configured for use across a wide range of industries.

You can fine-tune the system with your fleet and depot profile settings to take into consideration vehicle capacities, driver hours, site restrictions and set customer parameters for improved routing and loading accuracy.

Flexible and intuitive, Route Optimizer can be used across various industries: distribution, logistics, transportation, field services and mobile workforce management.

Route Optimizer

for Sage X3

Key Benefits

Improve efficiency and save time

Fully automated and optimized load planning allows you to schedule all your deliveries in minutes.

Fine-tune various parameters and perform simulations for fulfilling customer deliveries in the most cost effective and transport efficient manner.

Release extra time for your teams to manage picking, loading, documenting and preparing final dispatch.

Control transport costs

Route Optimizer helps you to use your resources effectively and streamline your operation, allowing you to remove unnecessary mileage and maximize daily mileage per vehicle.

Save money through optimal usage of existing fleet and avoid any expensive spot hires or subcontracting.

Regrouped deliveries by area into dense clusters and sequence your deliveries in the optimal order to help reduce fuel consumption and CO2 emissions.

Improve customer satisfaction

Whether you are offering one-hour time slots or AM/PM windows, Route Optimizer will ensure that the calculated delivery sequences meet restrictions expressed for customers.

Realistic routes and achievable schedules increase on time delivery success and improve customer satisfaction.

Strengthen your customer service offering with Route Optimizer.



Reduce planning efforts

Thanks to fully automated process, eliminate stress and minimize planning efforts.



Predictable delivery schedule

Upon validation of routing, customers receive email notification with accurate ETAs. Updates are communicated on any changes.



Maximize fleet utilization

Ensure your drivers are allocated as many deliveries as possible before subcontracting to expensive third party drivers and vehicles.

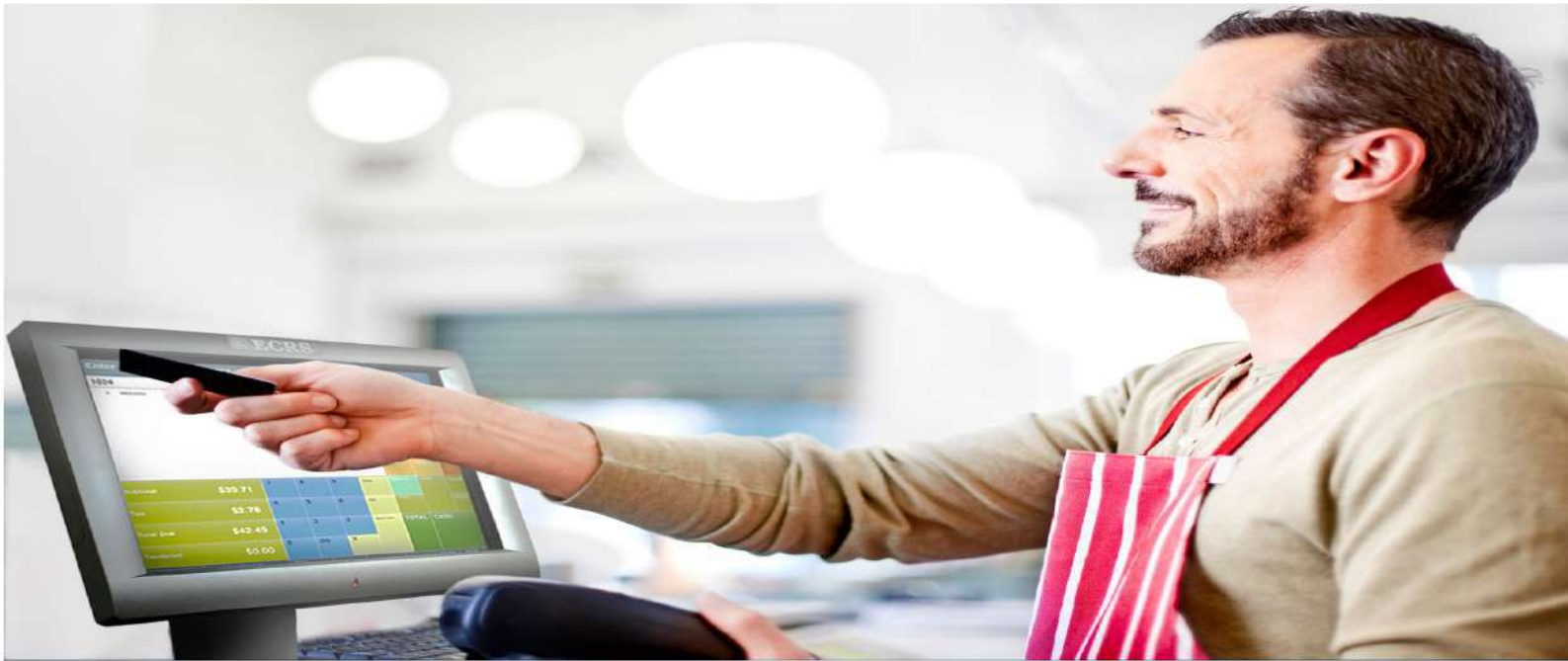


Track Costs and expenses

Define costs factors per vehicle, driver and delivery types. Track actual costs based on executed routings.

Speed Sales

for Sage X3



Simple, flexible and yet powerful POS for Sage X3

Key Benefits

- Configurable : unified or separate sales counter, payment and collection point.
- Role based user interface and security
- Simplified and intuitive user interface from sales to delivery, all in a single screen.
- Real time integration to inventory
- Automatic invoice posting to X3
- Automatic payment processing

Key Features

- Single screen driven interface for Sales and Returns
- Single line driven for stock level, price and discount
- Barcode scanning and printing
- Multi-Payments
- Customizable Receipts / Tickets
- Returns

Flexible

Whether your organization is a one-counter small store or a mid-size retail organization with multi sales points, payment and collection counters, Speed Sales offers flexible configuration.

Productivity

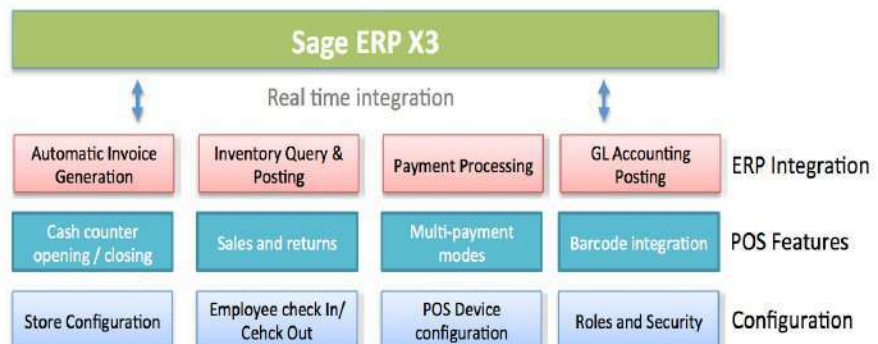
Bar code integration, shortcuts to most sold products, one click inventory check, simplified customer or product creation... Everything has been designed for productivity.

Simplicity

Speed Sales for X3 offers very simplified and intuitive user interface, allowing to manage sales and returns transactions within one single screen through which all functions are easily made available.

Realtime

All transactions and queries between Speed Sales and ERP features are processed on real time basis: inventory check, pricing, invoice posting, payment processing and GL account postings.





Contact us




Tema Business Systems

H.No: 1-53, Plot No: 27
401, 4th floor, Sagacity Heights,
Phase-1, Kavuri Hills, Madhapur,
Hyderabad: 500081, India.

contact@tema-systems.com
www.tema-systems.com



Created August 2015 - v 1 - Printed in India on recyclable paper.

-  www.tema-systems.com
-  contact@tema-systems.com
-  [TEMA_X3](#)

Disclaimer

The contents of this brochure is intended only for information purpose and cannot be used for any commercial purpose. Reproduction and/or redistribution of this material by any means and in any format is expressly prohibited without prior written permission.

TBS, Route Optimizer for X3, POD for X3 and associated logos, product and services are trademarks and properties of Tema Business Systems Pvt Ltd. Sage Software, the Sage ERP X3 logos, and the Sage Software product and service names mentioned herein are registered trademarks of Sage Group or its affiliated entities. Every effort has been made to properly capitalize, punctuate, identify and attribute trademarks and tradenames to their respective owners, including the use of ® and ™ (TM) wherever possible and practical.

All other trademarks are property of their respective owners.